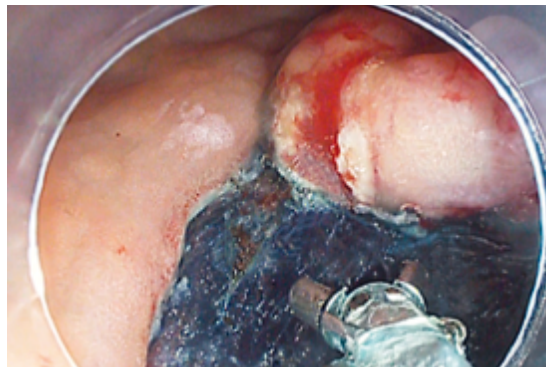


## PENTAX Medical ESD Accessories.

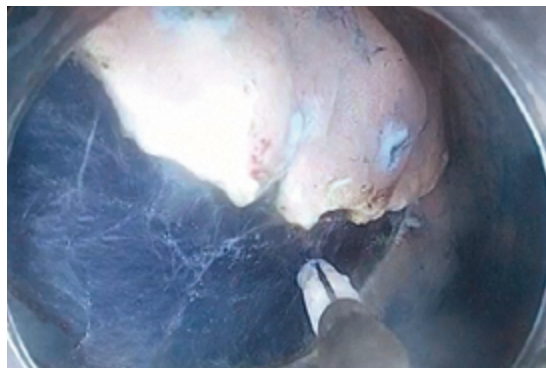
*Designed to make a difference.*



### Hemostasis with the bipolar HemoStat-Y

The HemoStat-Y is used to accomplish effective initial hemostasis for gastrointestinal bleeding.

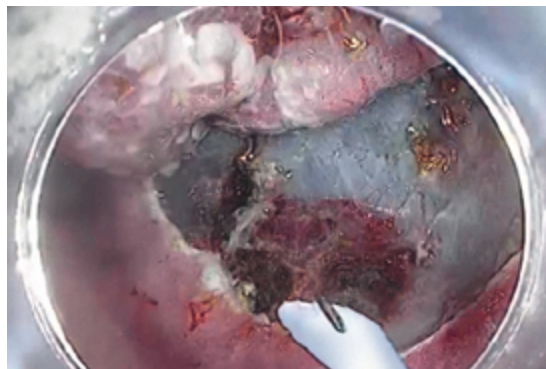
Its great flexibility makes it easy to use, even in difficult positions, and for a variety of applications\*\*. The bipolar forceps are designed to support fast and efficient hemostasis without causing damage to the deeper tissue through thermal degeneration\*\*. The HemoStat-Y enables long-term prevention of re-bleeding, especially during ESD.



### Dissection with Mucosectom

With its innovative design, Mucosectom overcomes the challenges of dissection procedures safely and time-efficiently.

The insulated tip can reduce the risk of perforation, while the extended knife length can reduce the amount of time the procedure takes. The knife on the side of the 360° rotatable tip, and the optical marker, assist the physician in holding the accessory in the direction of the lesion and dissecting it precisely.



### Dissection with Swanblade

The Swanblade supports a precise and safe dissection, mainly in the upper gastrointestinal tract.

The insulated tip can reduce the risk of perforation and its sloped distal end helps to block the muscular layer providing a safe dissection of the submucosal layer. The optical marker indicates the knife positioning while the 360° rotating tip with the lock function allows to precisely direct it in the lesion.

\*\* M Kataoka *et al.* Clinical evaluation of emergency endoscopic hemostasis with bipolar forceps in non-variceal upper gastrointestinal bleeding. Digestive Endoscopy (2010) 22, 151-155

**PENTAX Europe GmbH**  
Julius-Vosseler-Straße 104  
22527 Hamburg  
Germany  
Tel.: +49 40 / 5 61 92 -0  
Fax: +49 40 / 5 60 42 13  
E-mail: medical@pentax.de

**PENTAX U.K. Limited**  
PENTAX House  
Heron Drive, Langley  
Slough SL3 8PN  
United Kingdom  
Tel.: +44 17 53 / 79 27 33  
Fax: +44 17 53 / 79 27 94  
E-mail: medical@pentax.co.uk

**PENTAX France Life Care S.A.S.**  
112 quai de Bezons  
B.P. 204  
95106 ARGENTEUIL CEDEX  
France  
Tel.: +33 1 / 30 25 94 78  
Fax: +33 1 / 30 25 74 45  
E-mail: contact.medical@pentax.fr

**PENTAX Nederland B.V.**  
Amsterdamseweg 29  
1420 CA Uithoorn  
Netherlands  
Tel.: +31 88 / 5 30 30 30  
Fax: +31 88 / 5 30 30 40  
E-mail: medical@pentax.nl

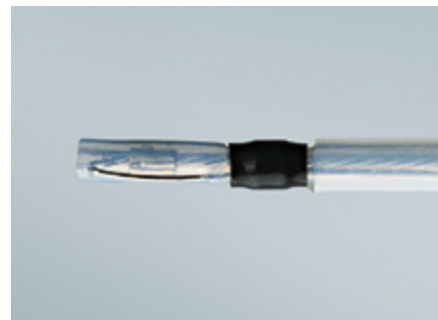
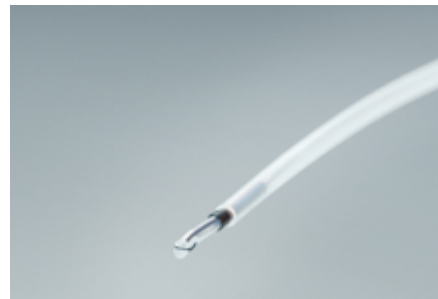
**PENTAX Italia S.r.l.**  
Via Dione Cassio, 15  
20138 Milano  
Italy  
Tel.: +39 / 02 50 99 58 1  
Fax: +39 / 02 50 99 58 60  
E-mail: marketing.lifecare@pentaxitalia.it

**SIMMEDICA – Sistemas Integrales de Medicina, S.A.**  
Avenida del Sistema Solar 25  
28830 San Fernando de Henares · Madrid  
Spain  
Tel.: +34 91 / 301 62 40  
Fax: +34 91 / 751 31 15  
E-mail: sim@simmedica.com

**PENTAX Europe GmbH**  
Representative office in Moscow  
Sadovnicheskaya str, 82, build 2, entrance 6  
Regus, Business center „Aurora”  
Office 2012, 2013  
Moscow, 115035  
Russian Federation  
Tel.: +7 495 / 792 52 00  
Fax: +7 495 / 792 35 66

**PENTAX Turkey**  
Veko Giz Plaza, Meydan Sokak  
No:3/43 343396  
Maslak – Istanbul  
Turkey  
Tel.: +90 212 / 705 05 26  
Fax: +90 212 / 705 05 00

**HOYA Corporation**  
**PENTAX Life Care Division**  
1-1-110, Tsutsujigaoka  
Akishima-shi  
196-0012 Tokyo  
Japan  
Tel.: +81 3 / 39 60 51 55  
Fax: +81 3 / 53 92 67 24







For time-efficient and safe procedures.

PENTAX Medical ESD accessories are innovative, easy to handle and highly controllable for any kind of dissection of the entire GI tract.

A full range of ESD accessories for a complete dissection.

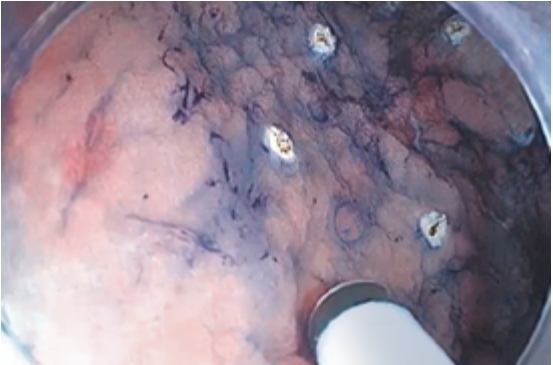
PENTAX Medical accessories cover all steps of the ESD procedure and can be perfectly combined with the PENTAX RetroView scope, with its unique 210° deflection ability and reduced bending radius of its distal end, for a safe and time-efficient dissection.

Marking and marginal incision with Splashneedle

The Splashneedle is a precise fine needle for marking, incision and dissection.

The needle length can be up to 2.5 mm enabling physicians to set up the knife accordingly and completing the dissection with a single accessory\*.

The fine needle makes it possible to resect using only coagulation current from mucosal incision to submucosal dissection, to reduce the risk of heavy bleeding. Finally, its water jet enables the accurate targeting and removal of lesions and provides a clearer view to assist in the identification of vessels and muscles.



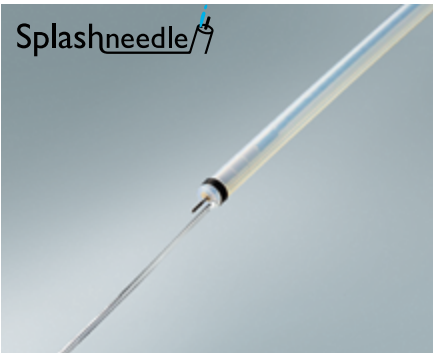
\* M. Fujishiro *et al.* Successful en bloc resection of superficial esophageal cancer treated by 30/11endoscopic submucosal dissection with a splash needle. Endoscopy 2008; 40: E81±E82

PENTAX Medical ESD – precise, efficient and safe.

Splashneedle – Precise and efficient



- Adjustable needle length for a complete dissection with a single accessory\*
- Fine needle suitable for marking, circumferential incision and starting the mucosal dissection
- Clean endoscopic view due to the water jet function



K-snare – All in one



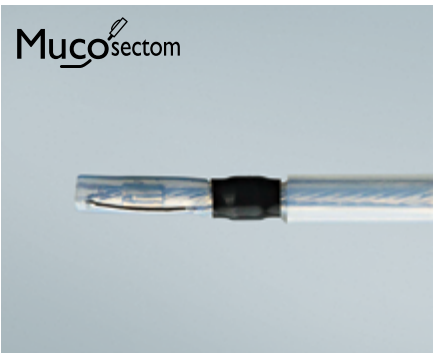
- Enables hybrid technique EMR/ESD especially in the colon
- Combines an adjustable knife on the tip for a precise marking and incision and a snare for resection
- The all-in-one accessory for a complete lesion resection



Mucosectom – For a safe and fast therapeutic approach



- Insulated tip and single sided knife for a safer dissection
- Rotatable tip with optical marker for a precisely directed dissection
- Extended knife length designed for a faster procedure



\* M. Fujishiro *et al.* Successful en bloc resection of superficial esophageal cancer treated by endoscopic submucosal dissection with a splash needle. Endoscopy 2008; 40: E81±E82

Swanblade – Precise and safe



- Insulated tip for a safer dissection
- Sloped distal end helps to block the muscular layer providing a secure dissection of the submucosal layer
- Rotatable tip with optical marker for a precisely directed dissection



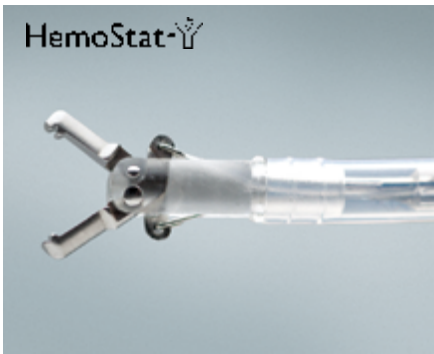
Bipolar HemoStat-Y – Easy control of bleeding

BIPOLAR



- Bipolar HemoStat-Y has less impact on deeper tissue in terms of thermal degeneration\*\*
- Enables long-term prevention of re-bleeding\*\*
- Due to its flexibility, it can be used on different applications such as EMR/ESD, gastrointestinal bleeding and papilla resection

\*\* M Kataoka *et al.* Clinical evaluation of emergency endoscopic hemostasis with bipolar forceps in non-variceal upper gastrointestinal bleeding. Digestive Endoscopy (2010) 22, 151-155



	Type	Working length (mm)	Min. channel (mm)	Max. outer diameter (mm)	Knife length (mm)	Snare/Cup opening (mm)	Adjustable knife length (mm)
Splashneedle	DN-D2718A	1,800	2.8	2.7	2.5		
	DN-D2722A	2,800	2.8	2.7	2.5		
K-snare	DO-D2618	1,800	2.8	2.6	6.0	22	2.0-6.0
	DO-D2622	2,200	2.8	2.6	6.0	22	2.0-6.0
Swanblade	DC-D2618	1,800	2.8	2.6	2.1		
HemoStat-Y*	H-S2518	1,800	2.8	2.6		4.0	
	H-S2522	2,200	2.8	2.6		4.0	
Mucosectom	DP-D2518	1,800	2.8	2.5	5.0		
	DP-D2622	2,200	2.8	2.6	2.5		

\* Equipped with active cord and plug